

Orange Flavoured



Entry / Carport



Entry / Lounge



Entry / Carport



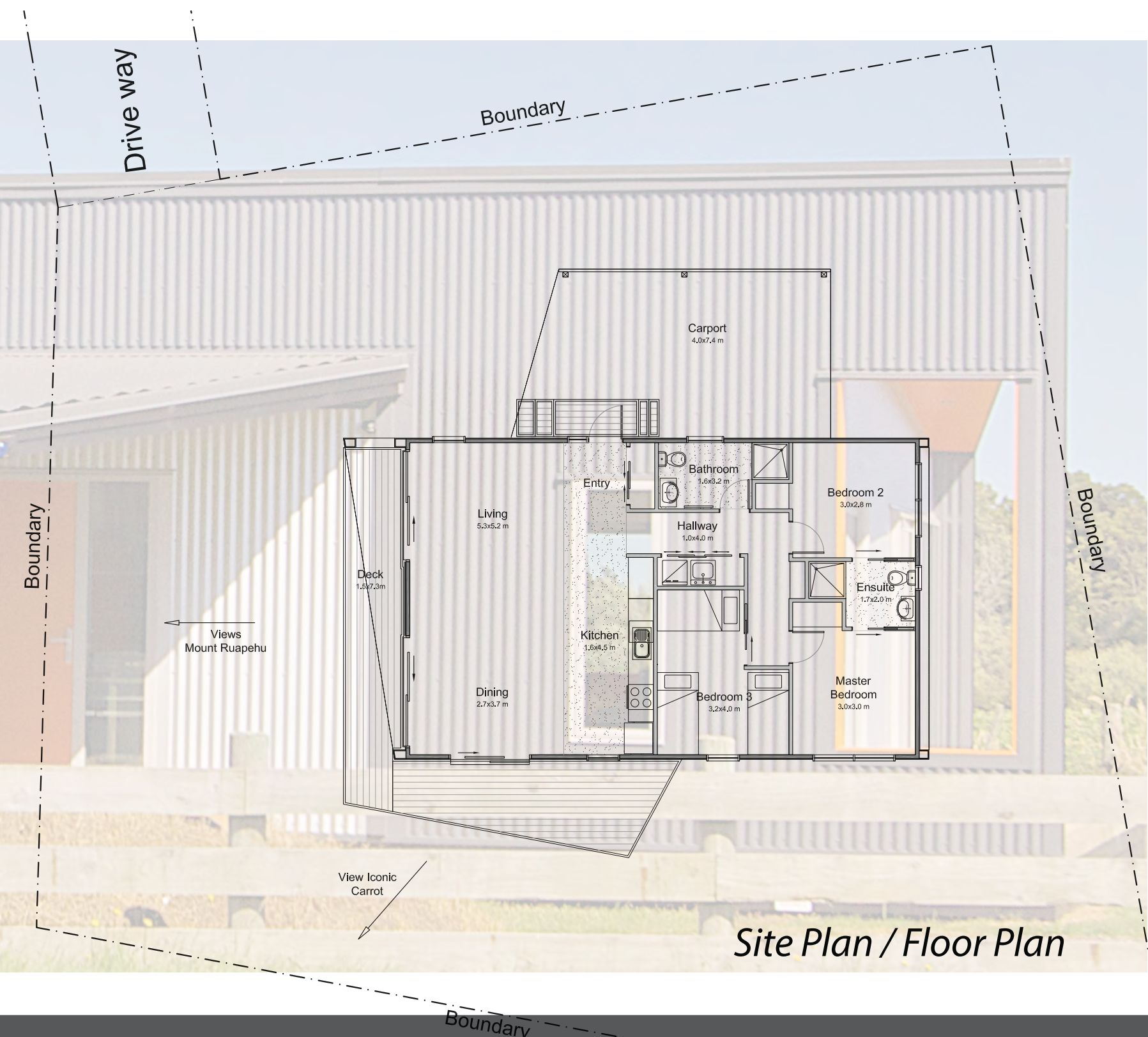
Carport / South Elevation

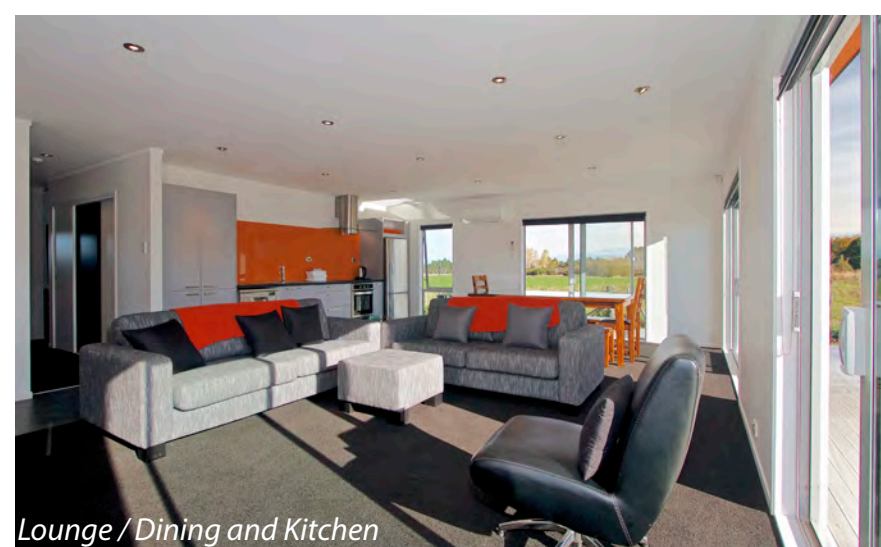
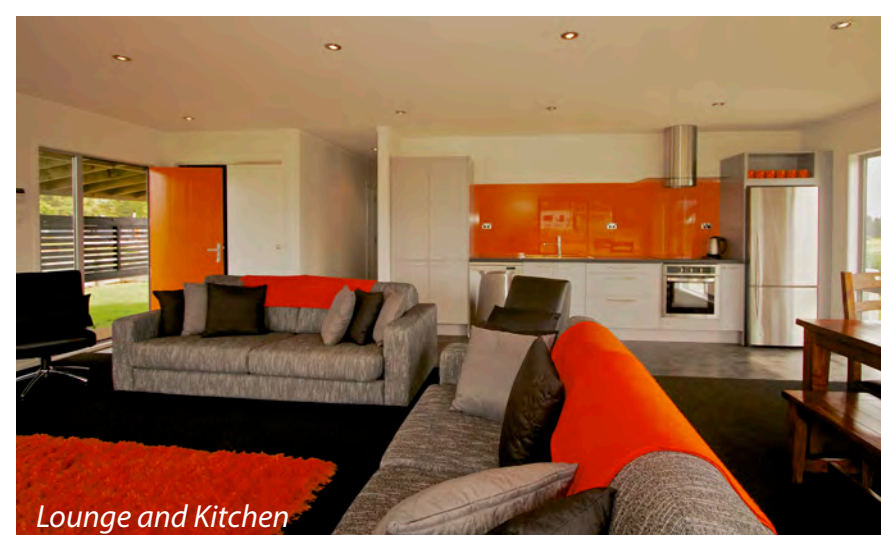
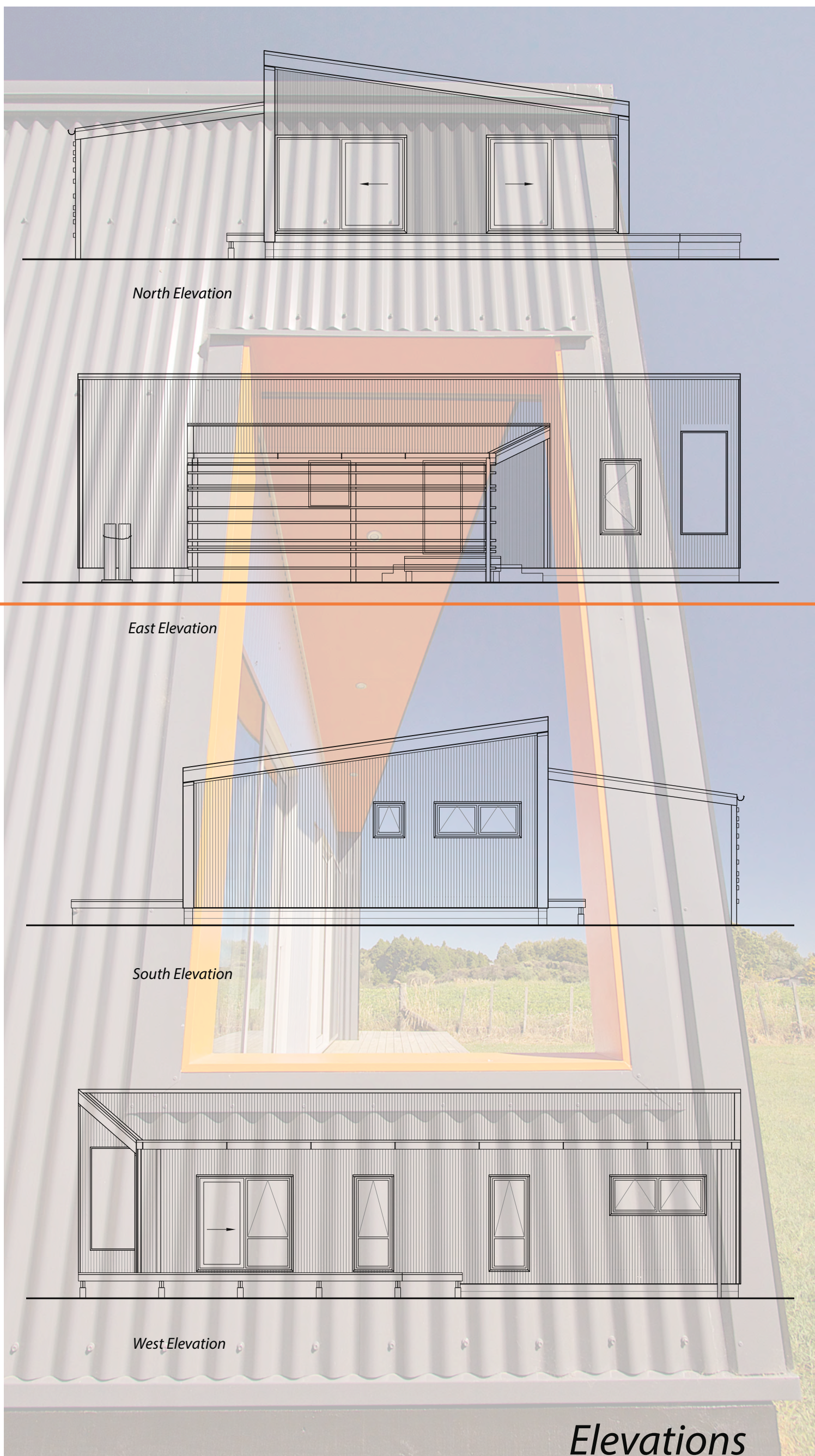


Architectural Designer: Maurice Regeer
123 Boucher Avenue, Te Puke 3119
Project: Orange Flavoured, Snowmass Drive, Ohakune
Floor Area: 97 m² building + 29 m² carport
Site Area: 645m²

Photographs: Glyn Hubbard Photography
MnM Design: M.Hoornstra

This compact yet functional holiday home is located at a rear section overlooking Ohakune's rural carrot fields. On top of that it has panoramic views of Mount Ruapehu. The house was designed to make the most of the sun from the north-west and provide shelter from the chilly south-east winds. Entry and carport shelter the house from the street and neighbouring houses. The wall opening gives a perfect see through over the drive way so occupants are not completely isolated from their environment. The building opens up to the north and west sides, for sun and views. The sunny orange colour makes the house radiate. It's used to outline the panoramic opening, emphasize the roof angle on the front soffit, front door and part of the carport screen. The outside of the bach has been clad in low maintenance vertical corrugated iron in a dark grey and silver colour.





For the landscaping the owners stuck to local materials and native plants. Most of the landscaping consists of orange lava rocks from the local Quarry and tough tussock grasses and flax. Once inside the house you start to appreciate the icons of its surrounding, the outlook over the carrot fields and Mount Ruapehu with its snowcapped tops. Splashes of orange bring the interior to life. This compact bach has a simple layout but can accommodate two families easily. There are 2 similar double rooms, that share the ensuite separating them. For the kids there's a bunk bedroom with 3 built-in timber bunk beds and enough room for tv and other entertainment. The Orange Flavour holiday home represents good living and appetite shared with friends, celebrating the sunny side of life.



Orange Flavour