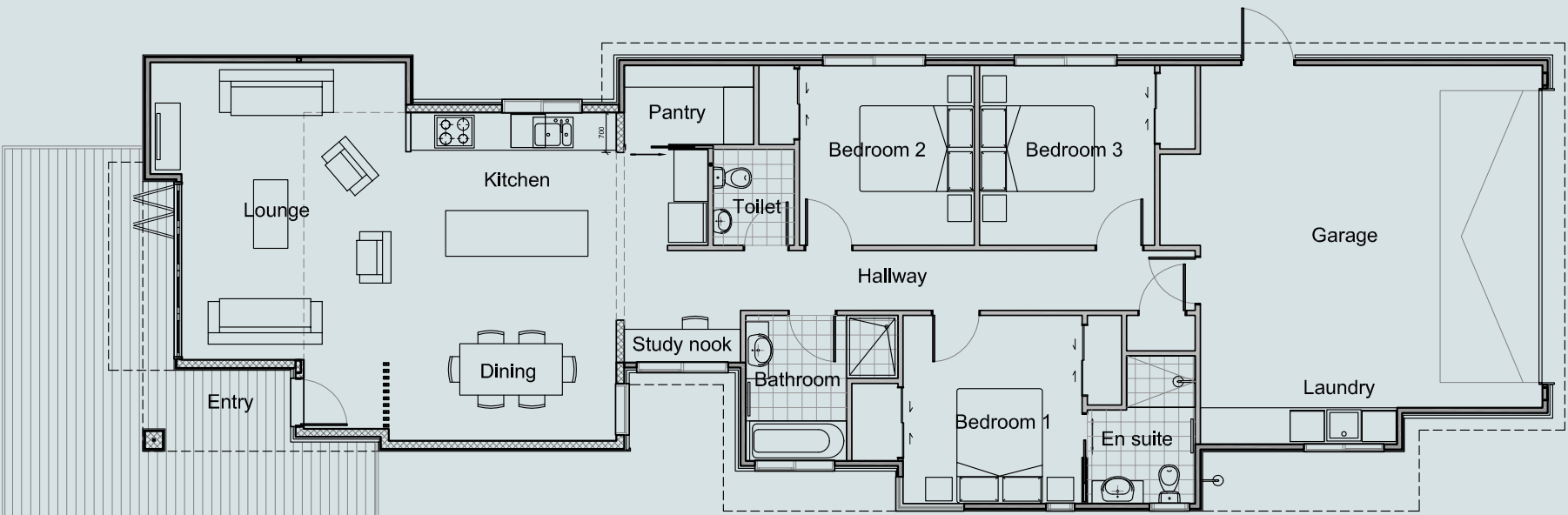


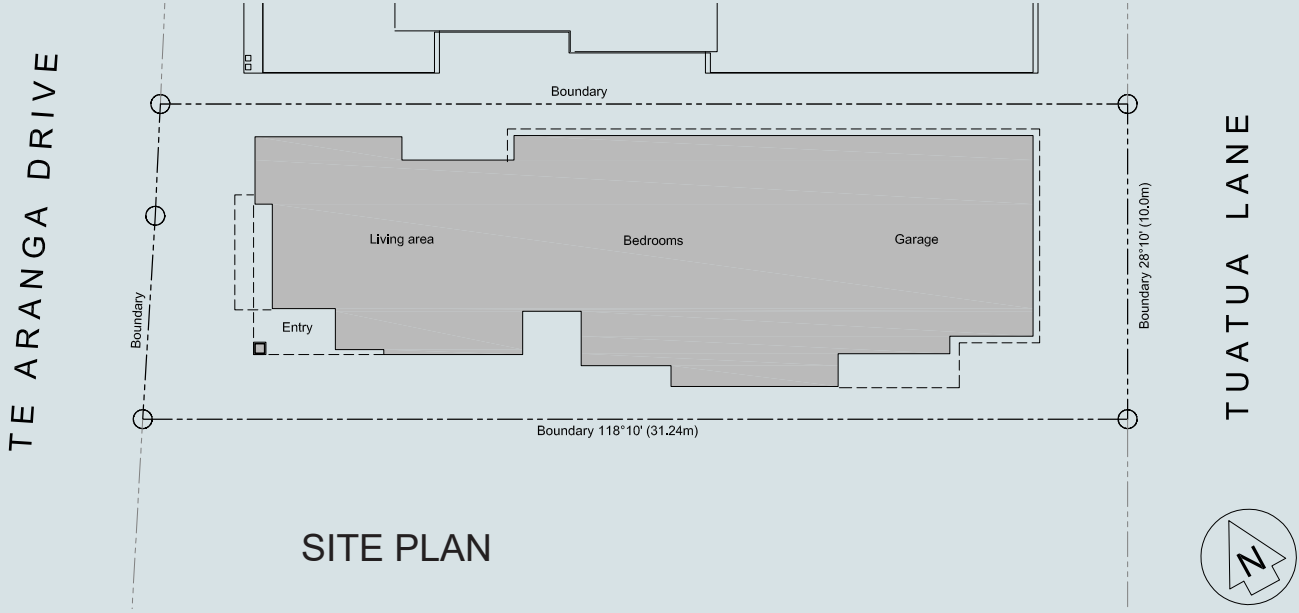
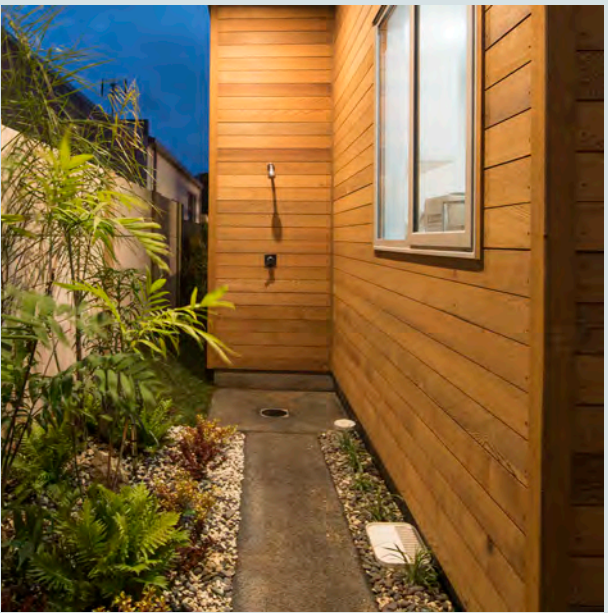
TUATUA LANE



FLOOR PLAN

Tuatua Lane, Papamoa Beach

Designed to create a standout building in a generally plain medium density area within restrictive building site. Located within walking distance from Papamoa beach the building and its two siblings stand out from the crowd.



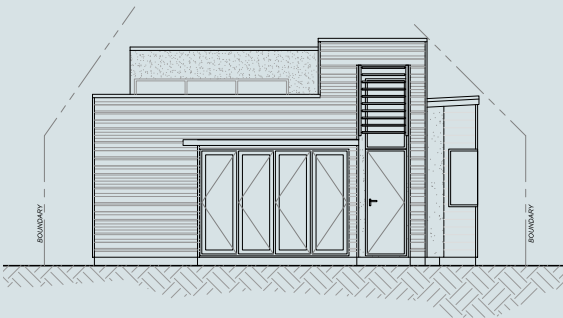
SITE PLAN

The 170m² 3-bedroom house straddles Te Aranga Drive and Tua Tua Lane, this allows a stretched aspect with Grand entrance on one side and service access on the other. Defined by its Grand Entry, this main feature has been raised to allow light to flow into the open plan lounge. The entry area and lounge have horizontal cedar weatherboard cladding with random width thickness, giving it a bespoke texture. This is contrasted by white plaster surrounding the doorway to create an inviting entrance.

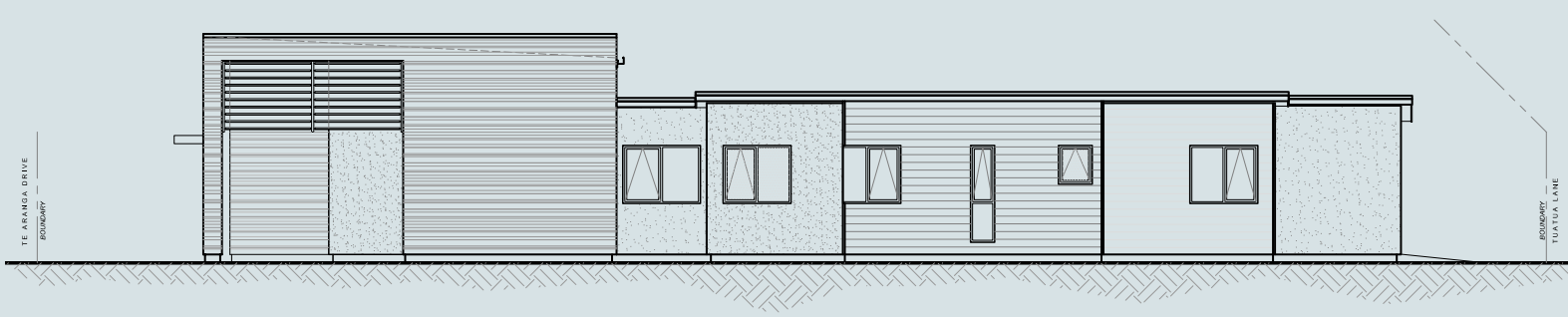
The white plaster finish flows around the building with Pockets of Greenery to break up the exterior lines creating a layered connection between the two access points, the pockets and windows were placed by design to provide privacy from the proximity of the neighbors and allow light to grace the interior. Entering into the open plan living area one notices the lifted ceilings, high windows in the north and west which provide natural light.

The interior has a mainly white finish which refers to the exterior plaster. Subtle touches of black in the kitchen and bathroom add contrast. LED lighting is used throughout the house. Controlled via a smart control hub that allows power management and monitoring to future proof the house.

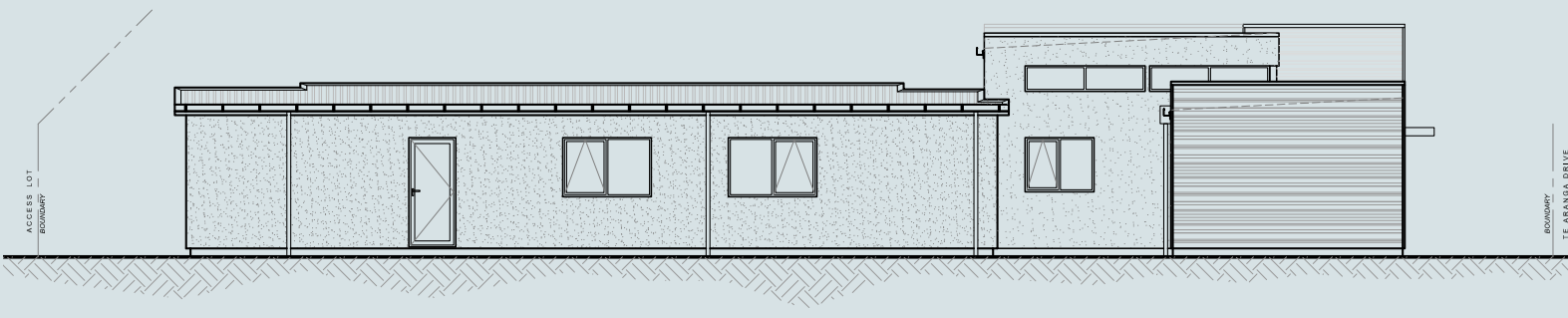




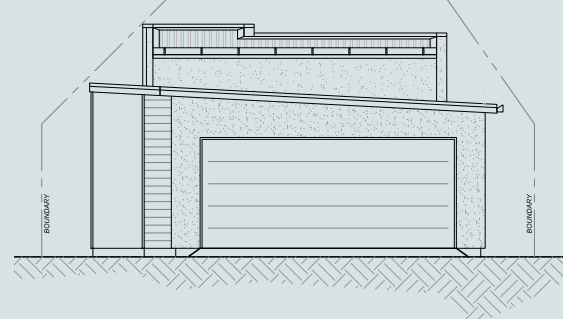
WEST ELEVATION



SOUTH ELEVATION



NORTH ELEVATION



EAST ELEVATION

