



Entry and drive way



Architectural Designer:

Maurice Regeer  
123 Boucher Avenue,  
Te Puke 3119  
Kowhai Cabin, Ohakune  
112 m2  
KirkRoberts Consulting Engineers Ltd.  
Glyn Hubbard  
Kristina Thompson  
MnM Design: M. Hoonstra

Project:  
Floor Area:  
Consultants:  
Photographs:  
Photographs:  
Interior Design:

This uncomplicated wooden cabin with its raw form and finishes, sits effortlessly in its natural surroundings. It protects the occupants from the elements and hides a surprisingly warm interior. The holiday cabin is built as a hideout for summer and winter while enjoying the outdoors. The holiday cabin is built as a hideout for all seasons while enjoying the outdoors. Untreated Siberian larch cladding is combined with charred larch in feature areas, cutting into the main volume. Bi-fold screens corner off the entry area when the house is unoccupied, but can be transformed into a lockable storage area or a carport if completely folded away. After entering the cabin the framed views direct the attention to the outdoors, the mountain on one side, sky, trees and open fields on other sides.



# KOWHAI CABIN



Lounge deck - North side



Lounge area



Entry to lounge



Lounge to kitchen / dining





Kitchen / dining to lounge



Kitchen / dining to lounge & pantry



Kitchen / dining



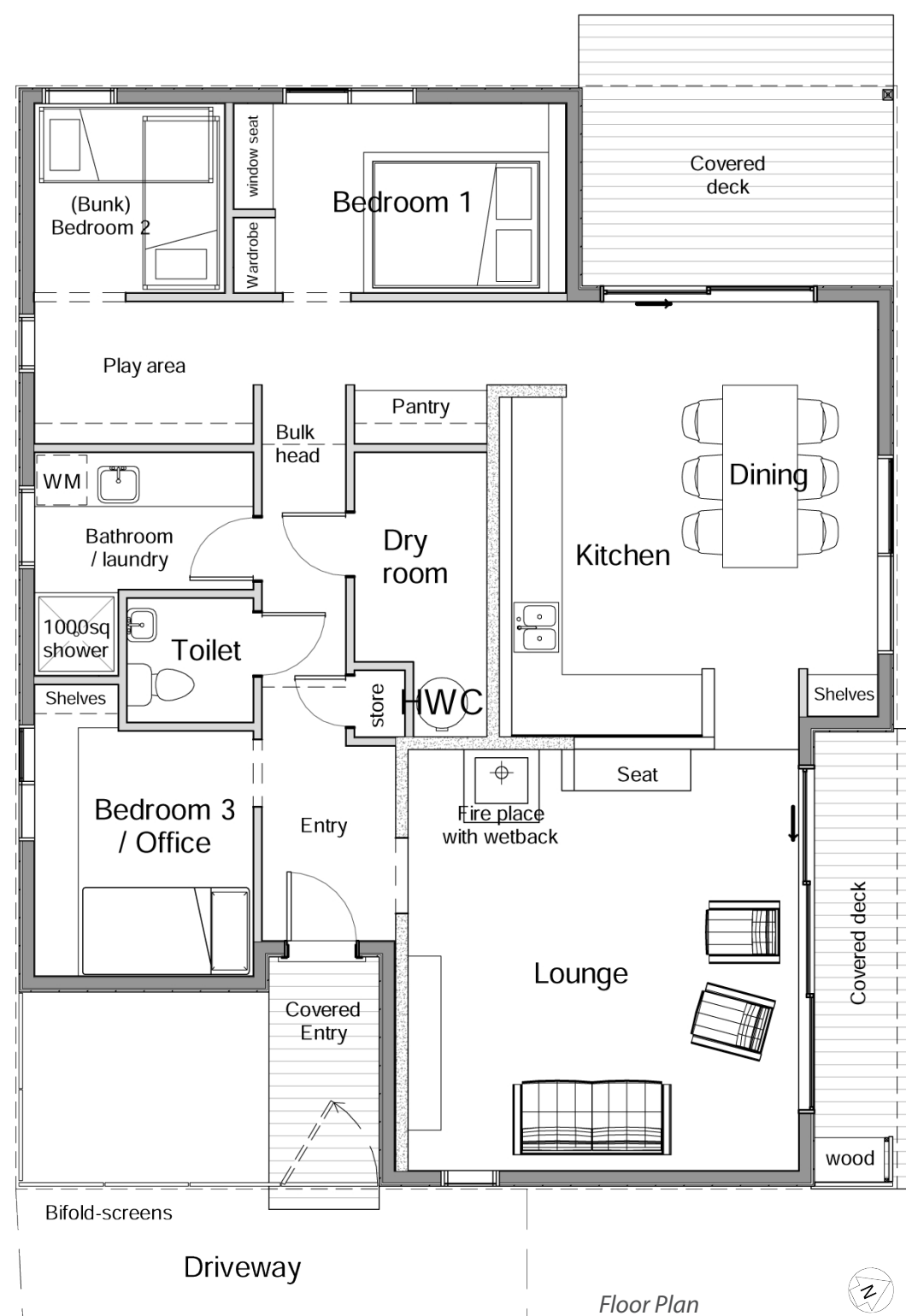
**Architectural Designer:** Maurice Regeer  
123 Boucher Avenue, Te Puke 3119  
Kowhai Cabin, Ohakune

**Project:** 112 m2

**Consultants:** KirkRoberts Consulting Engineers Ltd.  
Glyn Hubbard

**Photographs:** Kristina Thompson

**Interior Design:** Mm Design: M. Hoornstra



The simple rectangular floor plan divides the cabin into private and social areas, with the concrete walls as a spine through the center. These walls help to keep the house at a constant temperature throughout the year. In the center of the cabin are the kitchen, pantry and dry room, everything else folds around this center.

The cabin seems to be a non-stop dialogue between interior and exterior it wants to be open and (en)closed, warm and cool at the same time. The cabin has been built as an experiment: to find out if heat can be retained and then slowly released by optimizing orientation, materials, insulation and applying specific membranes and only heated by a wood fire. The concrete spine creates an effective thermal mass. The excess heat from the wetback fireplace can be pumped into the pipes in the concrete to store the heat and slowly release it over time. The cabin is designed to get as much sun in as possible (to heat the concrete) in winter and keep the wind out in summer, while still opening up to the outdoors. The striking yellow and black entrance draws you in and reveals a glimpse of the warm interior. The interior is a mix of different textures and colours designed to make you feel protected and warm in winter and cool and sheltered in summer: dark and light blue with pops of yellow, rough concrete walls with smooth velvet fabric, warm timber with cool concrete floors. The direction of the larch sarking in the lounge is used to draw the eye straight to the mountain. The lines of timber continue through to the outside, with timber soffits and decks, to support the indoor / outdoor flow. Throughout the house you'll find traces of (Dutch) heritage, but also ancient Japanese technique (Shou-sugi-ban, the charring of timber), re-used 100-year-old rimu and re-purposed furniture. The main goal was to design a warm cabin to come home to in winter and a cool retreat in summer that connects to the elements all year round.



Bathroom / laundry



Bedroom 1 - pantry



Play area to bunk room



Bunk room (bedroom 2)



Hollandse huisjes - Dutch facades